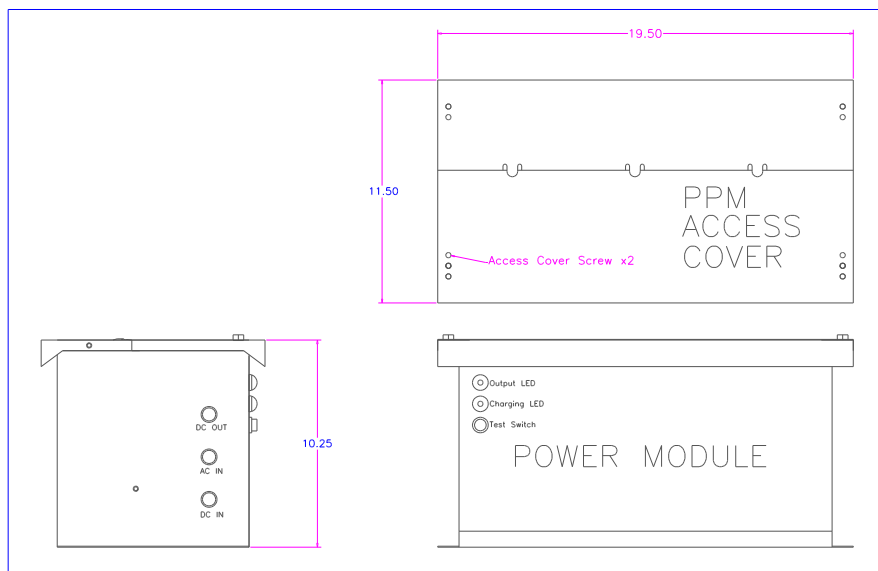


C500-24 POWER MODULE

MODULAR EMERGENCY SYSTEMS for FLUORESCENT LAMPS and other DC loads

InContinuum 24VDC Power Modules are part of a complete emergency system that, with the applicable Battery Module, provide true on-line, continuous uninterruptible power and full-lumen output for most standard, compact, and F96 slimline fluorescent or metal halide lamps and/or other DC loads.



C500-24 Power Module

InContinuum Power Modules accept any 120/277±15%VAC, 60Hz input, and provide maximum 500 Watts @ 24VDC nominal to ballasts and/or other DC loads. Operation is continuous and emergency power is maintained by Battery Module for 90 Minutes or other desired runtime. Fluorescent lamps are driven by high-frequency solid state ballasts. This allows the Modular Emergency system to maintain normal light output for all lamps, even during the loss of AC power.

Power Modules are mounted with Battery Modules in a remote location, i.e., maintenance or electrical close, or in the plenum with independent support. Optional Mounting shelf is available.

Electrical and Mechanical Specifications:

Power Module	Input Voltage	Hz	Vo	Pw	PF	THD	Dimensions			
							L	W	H	WT
C500-24	120/277±15%VAC	60	24	500	>.9	<15	19.5	9	7	20

LEGEND

Input Voltage(L)ow range to any input 120-127±15%VAC 60Hz

(H)igh range to any input 220-277±15%VAC 60Hz

HZInput frequency of module

VoOutput voltage of module

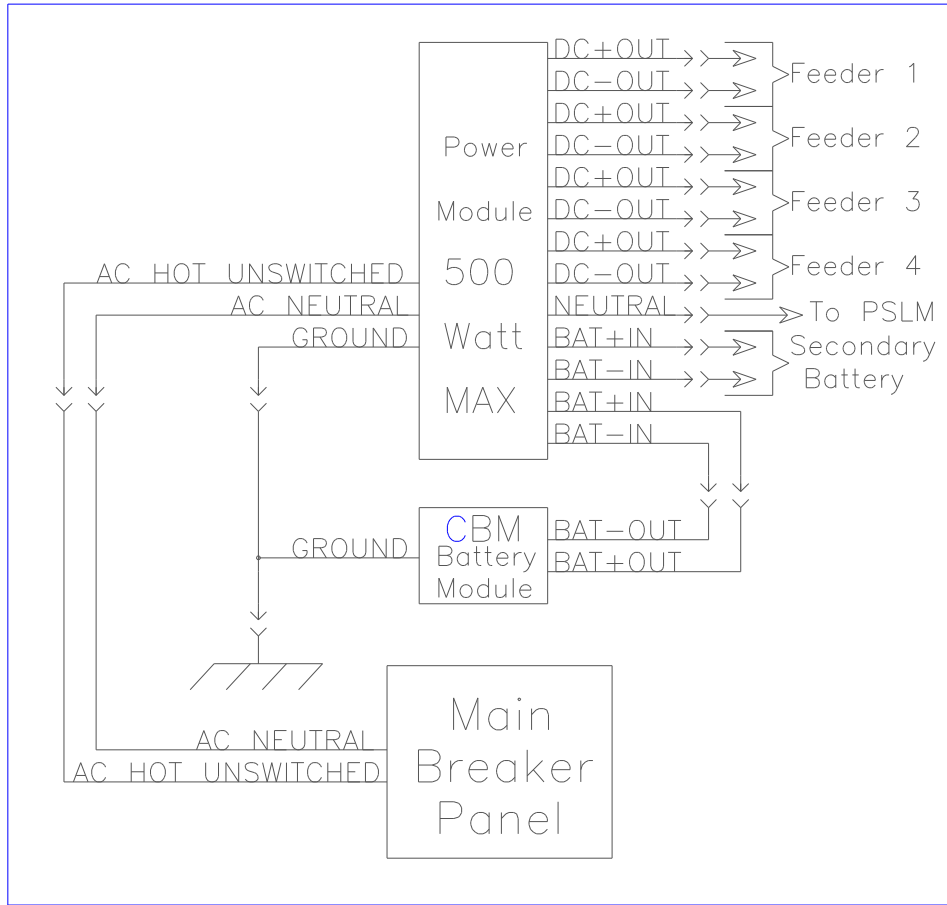
PwMaximum continuous power of module in watts

PFPower Factor

THD% of Total Harmonic Distortion

DimensionsOutside dimensions of entire module in inches, weight in pounds

InContinuum Modular Emergency System



Power Module (C500-24) Wiring Diagram

C500-24 POWER MODULE Product Summary

UL LISTED	UL 924
UNINTERRUPTIBLE ILLUMINATION:	Full rated lumens per lamp
TEST SWITCH:	Located on Power Module
LED CHARGING INDICATOR:	Located on Power Module
INPUT VOLTAGE RANGES:	(L)ow 120±10%VAC, 60Hz (H)igh 277±10%VAC, 60Hz
POWER FACTOR:	Greater than 90%
TOTAL HARMONIC DISTORTION (THD):	Less than 15%
ELECTRICAL POWER:	Fully Charged, Lamps OFF- _____Watts Fully Charged, Lamps ON - _____Watts Fully Discharged, Lamps ON - _____Watts
WARRANTY:	3 Years

SAMPLE SPECIFICATION: Emergency lighting units shall be *InContinuum Modular Systems* as Manufactured by **Æon Corporation**, of Oklahoma City, Oklahoma, with maximum 500-watts continuous power output, incorporating solid state high-frequency inverter ballasts and capable of providing full normal lumen light output from any F32T8, FT40T12, F39/40 Biax lamp, F96 Slimline lamp for a minimum of 90 minutes during loss of AC power, to a controlled cut-off at 87 1/2% of 24 volts. The systems shall operate in a continuous on-line mode with zero (0) transfer time at loss of power, and shall contain a solid state voltage-controlled pulse charging system which will restore discharged batteries within four hours or less with lamps off, and 12 hours or less with lamps on. Batteries shall be sealed, pure lead, starved electrolyte (nickel-cadmium batteries not acceptable) with expected life of 8-10 years. Systems shall include logic circuitry if required, allowing interface with the following switch types: remote wireless, occupancy sensor, energy management computers or normal wall switches. Systems shall be fully warranted for three years.